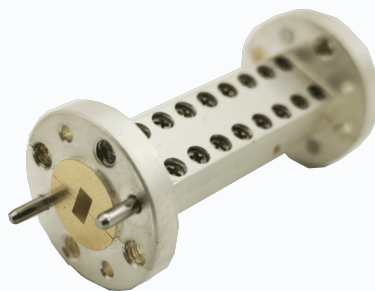


# Diplexer WR430 to WR12



## TECHNICAL SPECIFICATIONS

- Low Insertion Loss for efficient signal transmission across all waveguide bands
- High isolation between the two signal paths – minimal coupling and sidelobe suppression
- Broadband frequency coverage from WR430 to WR12 with sharp transition characteristics
- Excellent Return Loss and VSWR to optimize system efficiency

## APPLICATIONS

Radar systems and FMCW-based sensors

SATCOM and satellite navigation

Defense and Test and Measurement systems

5G/6G test setups and laboratory applications

HPA/LNA combinations in transceiver architectures