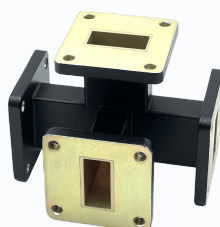


# Magic Tees up to 170 GHz



## TECHNICAL SPECIFICATIONS

- Frequency range up to 170 GHz – from sub-6 GHz to mmWave and beyond
- E-Plane and H-Plane configurations for flexible signal routing options
- **Comprehensive waveguide portfolio**  
WR2300, WR1800, WR1500, WR1150, WR975, WR650, WR430, WR340, WR284, WR229, WR187, WR159, WR137, WR112, WR90, WR75, WR62, WR51, WR42, WR34, WR28, WR22, WR19, WR15, WR12, WR10, WR8, WR6
- Low insertion loss and high isolation values
- High-power design for CW and pulsed operation

## APPLICATIONS

Radar and FMCW systems  
(Defense, ADAS, Automotive)

Satellite communications  
(SATCOM) and 5G/6G  
infrastructure

Test and measurement systems,  
HPA and LNA integration

Phase comparison circuits in  
PLL/VCO designs

Research and development  
applications in the THz range