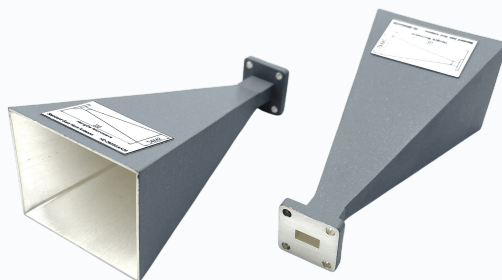


Antennas up to 1100 GHz



TECHNICAL SPECIFICATIONS

- **Frequency range**
200 MHz to 1100 GHz
- Wideband horn antennas for broadband applications up to 40 GHz
- Circularly polarized variants for polarization-dependent systems
- Omni directional antennas for far-field coverage
- Low VSWR and high gain characteristics
- Gain horn antennas with optimized beam pattern for focused radiation characteristics
- Probe antennas for precise field measurements up to 500 GHz
- Conical horn lens antennas with integrated lens systems
- Custom solutions designed to specification

APPLICATIONS

6G and 5G test and measurement stations

Millimeter-wave radar and FMCW sensors

SATCOM and defense systems

THz spectroscopy and imaging

Wireless backhaul and point-to-point links

Laboratory test and measurement and calibration

ADAS development and validation