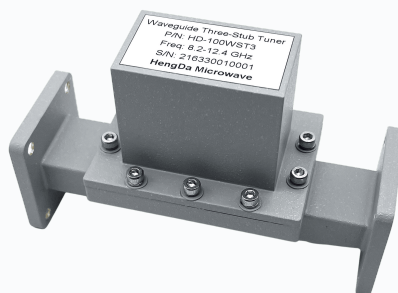


Waveguide Stub Tuner up to 40 GHz



TECHNICAL SPECIFICATIONS

- Frequency range up to 40 GHz, compatible with standard waveguide formats (WR-28, WR-22, WR-19)
- Triple-stub or single-stub configuration for broadband or narrowband matching
- Precision micrometer screws with scale for reproducible settings
- Low insertion loss through direct waveguide coupling without dielectric losses
- High power handling up to several kilowatts CW power (depending on waveguide format)
- Flange design according to EIA, UG, or custom specifications

APPLICATIONS

Impedance matching in test and measurement systems

Tuning of power amplifiers and transmitter output stages

Optimization of antenna feed systems

Calibration and characterization of RF components

Research and development in radar and satellite communication

Plasma excitation and industrial RF heating