

Modules with 1.85mm

Shanghai AT Microwave Ltd.  
[sales@atmicrowave.com](mailto:sales@atmicrowave.com)

2022-1-7

# 1.85mm Modules

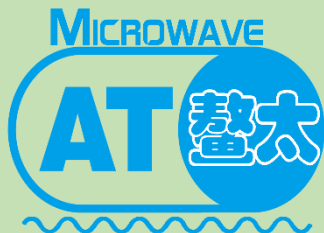
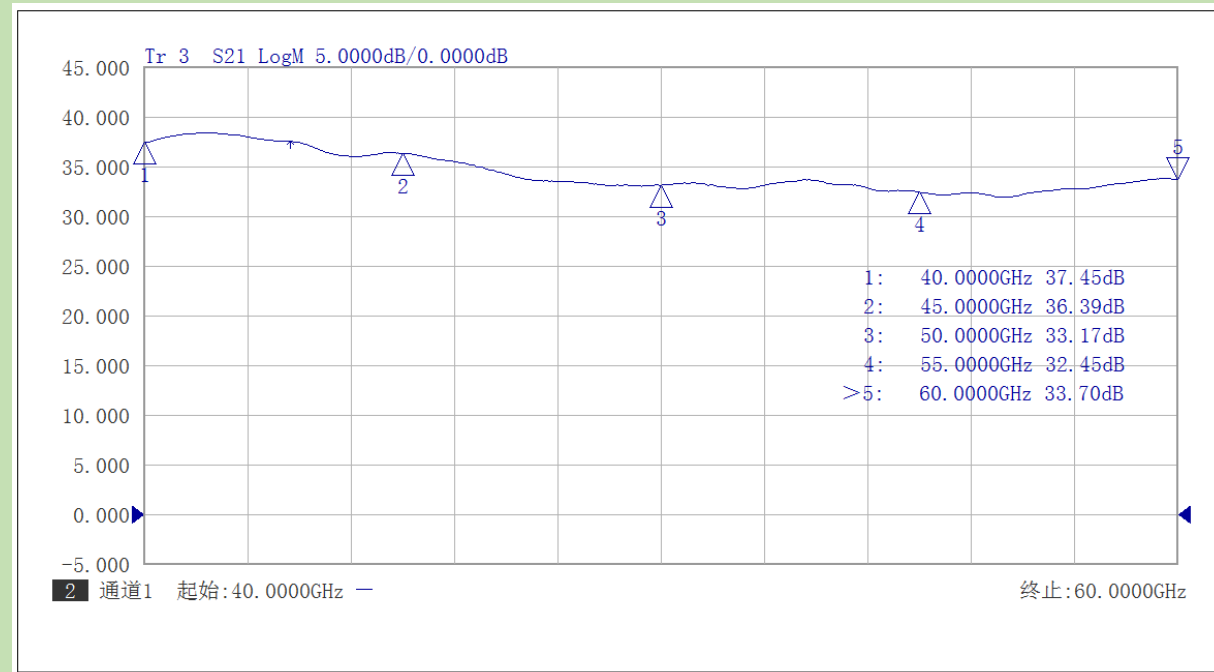
1. Broadband/Narrow-Band Low Noise Amplifier
2. Broadband/Narrow-Band Power Amplifier
3. Ultra-Broadband Amplifier
4. Frequency Multiplier
5. Up/Down Converter with Amplified Multiplier Chain
6. Passive Modules(DC Block, Bias Tee, Adapter)
7. Test Equipment

# 1. Broadband Low Noise Amplifier

AT-LNA-4060-3306VC

AT-LNA-4067-3306VC

- ✓ Frequency: 40-60GHz
- ✓ Can be extended to 40-67GHz
- ✓ Gain: 33dB
- ✓ NF: 6dB
- ✓ P1dB: +10dBm
- ✓ Psat: +12dBm
- ✓ Connector: 1.85mm Female

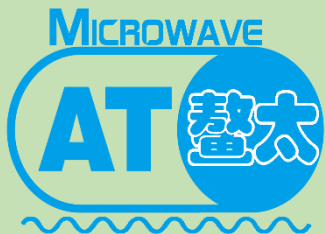
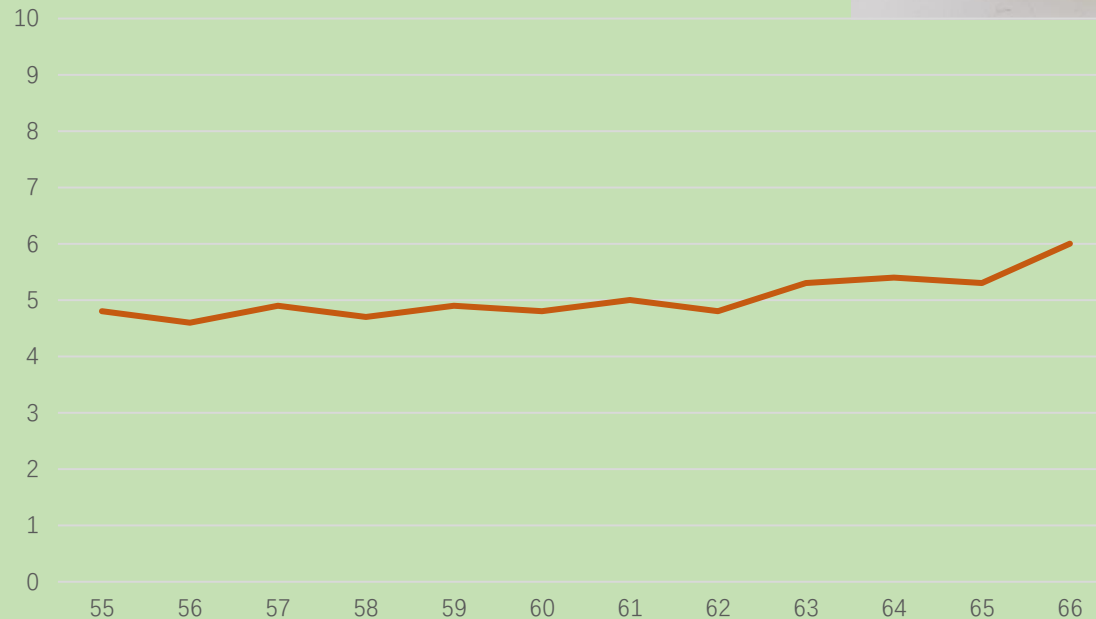


# 1. Narrowband Low Noise Amplifier

AT-LNA-5566-1506VC

AT-LNA-5566-3506VC

- ✓ Frequency: 55-66GHz
- ✓ Gain: 15/35dB
- ✓ NF: 6dB
- ✓ P1dB: +10dBm
- ✓ Psat: +12dBm
- ✓ Connector: 1.85mm Female

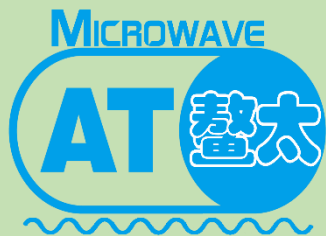
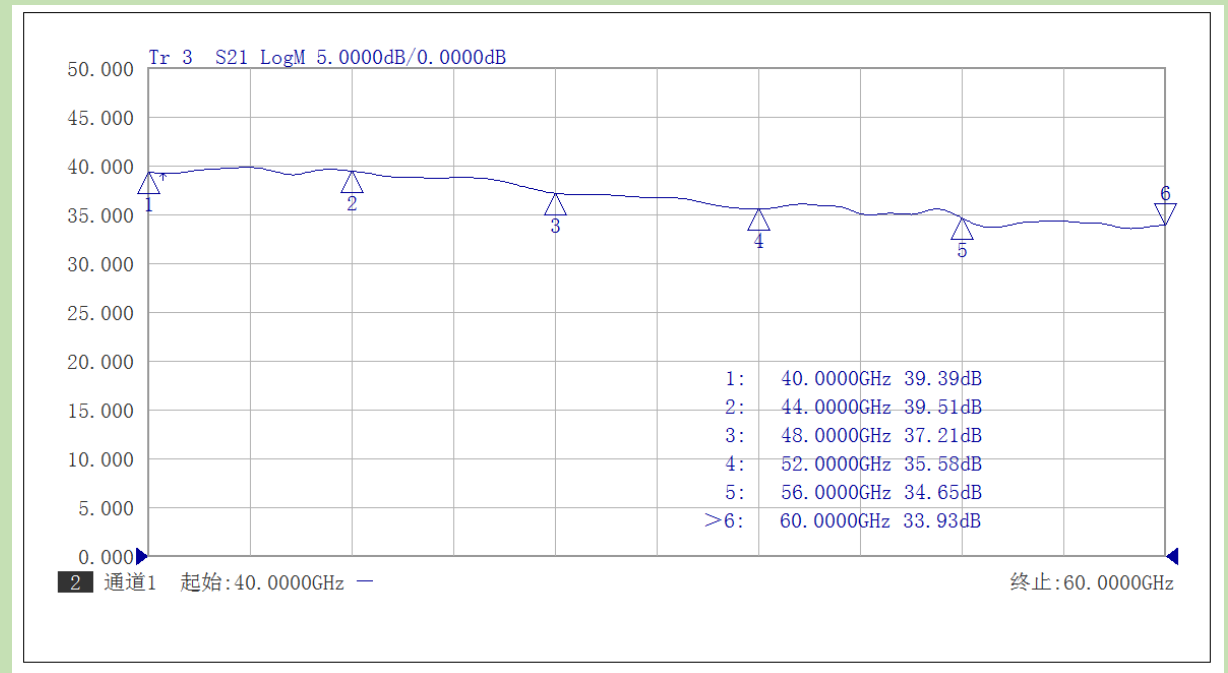


# 2. Broadband Power Amplifier

AT-PA-4060-3320VC

AT-PA-3767-3020VC

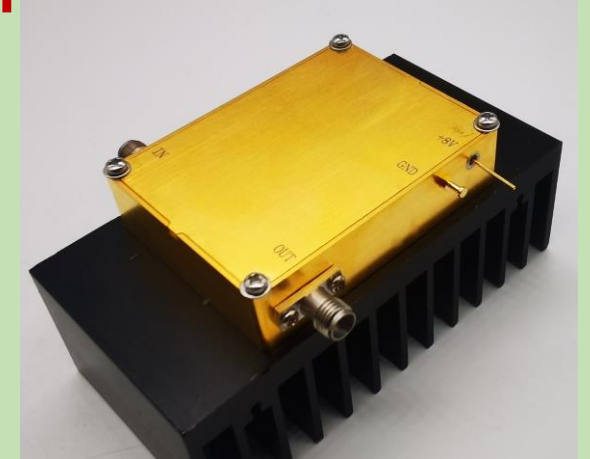
- ✓ Frequency: 40-60GHz
- ✓ Can be extended to 37-67GHz
- ✓ Gain: 33dB
- ✓ P1dB: +18dBm
- ✓ Psat: +20dBm
- ✓ NF=6dB
- ✓ Connector: 1.85mm Female



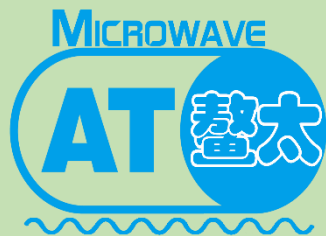
## 2. Broadband/High Power Amplifier

**AT-PA-4067-3532GN-18F18F**

- Frequency: 40-67GHz
- Gain: 35dB
- P1dB: tbd
- Psat: +32dBm
- Bias: +16V/1.5A
- Connector: 1.85mm Female



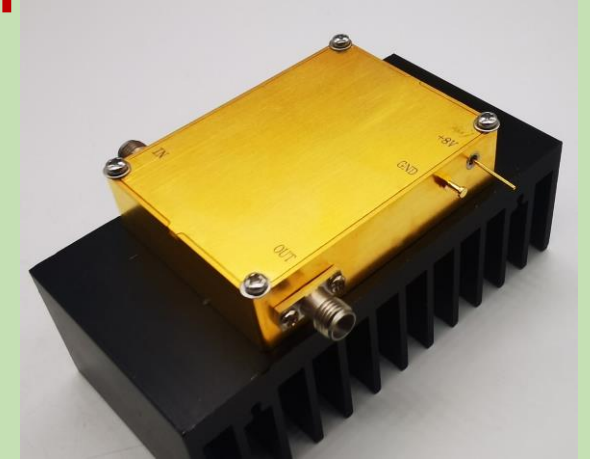
**Test data to be added**



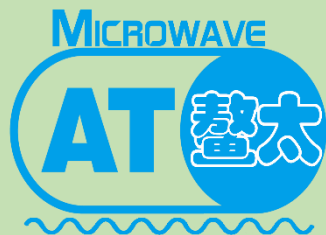
## 2. Broadband/High Power Amplifier

AT-PA-4067-4035GNT-18F18F

- Frequency: 40-67GHz
- Gain: 40dB
- P1dB: tbd
- Psat: +35dBm
- Bias: +20V/2.5A
- Connector: 1.85mm Female



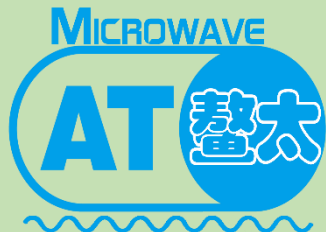
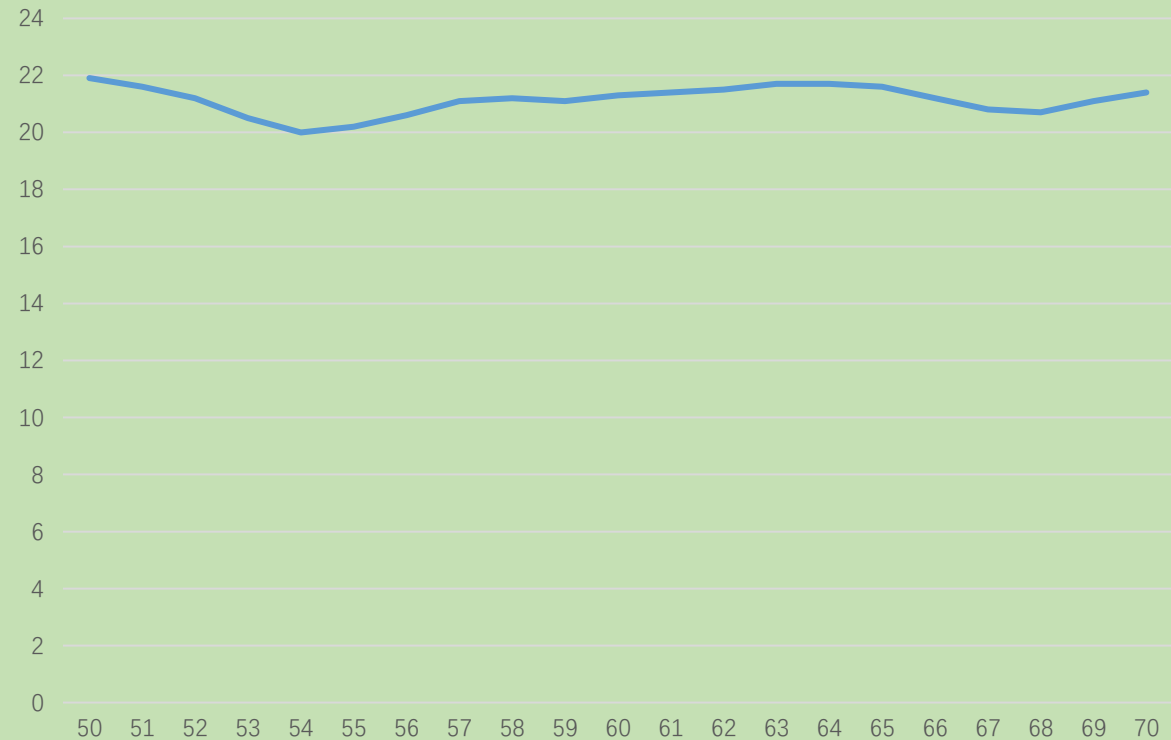
Test data to be added



# 2. Narrowband Power Amplifier

## AT-PA-5070-3020VC

- ✓ Frequency: 50-70GHz
- ✓ Gain: 30dB
- ✓ P1dB: +18dBm
- ✓ Psat: +20dBm
- ✓ NF: 6dB
- ✓ Connector: 1.85mm Female

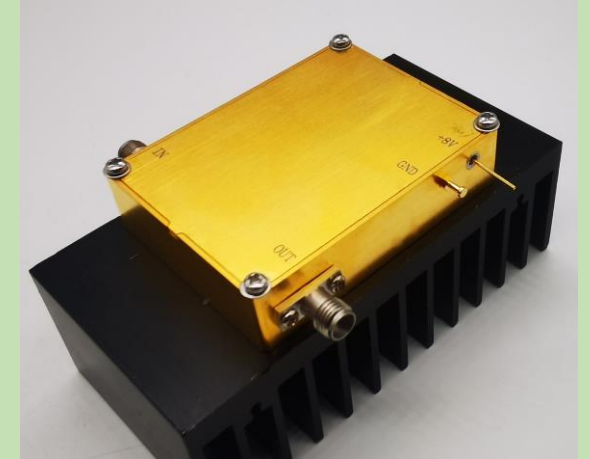




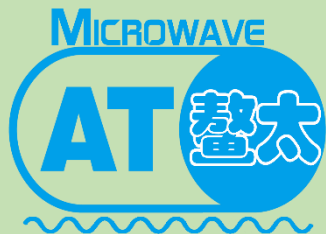
## 2. Narrowband Power Amplifier

**AT-PA-5766-2526VG-18F18F**

- ✓ Frequency: 57-66GHz
- ✓ Gain: 25dB
- ✓ P1dB: +25dBm
- ✓ Psat: +26dBm
- ✓ Bias: +5V/1.8A
- ✓ Connector: 1.85mm Female



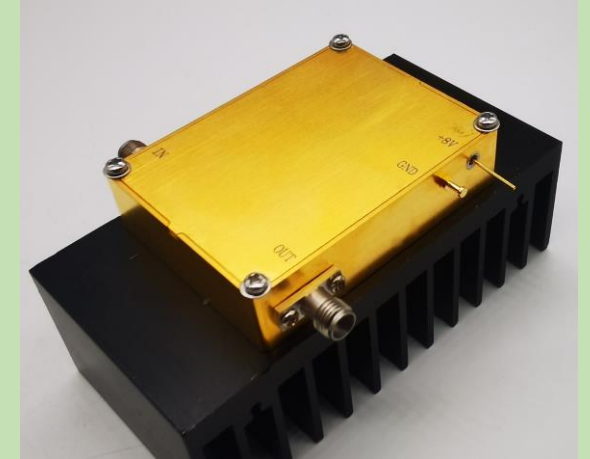
**Test data to be added**



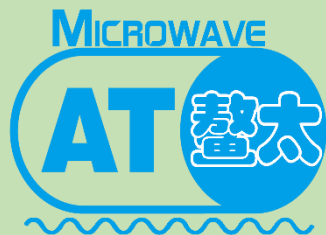
# 2. High Power Amplifier

## AT-PA-5766-3035VGN-18F18F

- Frequency: 57-66GHz
- Gain: 30dB
- P1dB: tbd
- Psat: +35dBm
- Bias: +20V/2.5A
- Connector: 1.85mm Female



Test data to be added

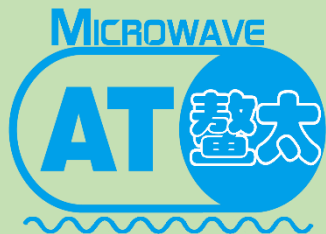
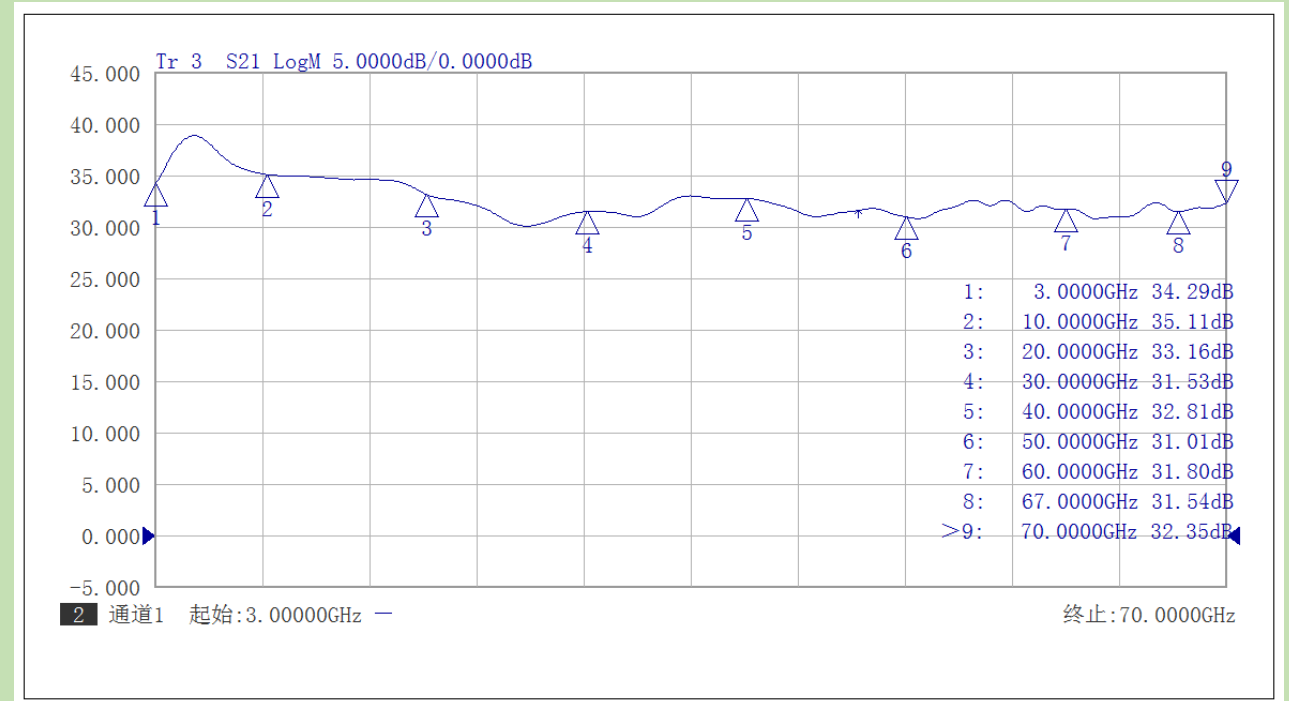


# 3.Ultra-Broadband Amplifier

AT-BB-0367-1815C

AT-BB-0367-2715C

- ✓ Frequency: 3-67GHz
- ✓ Gain: 18/27dB
- ✓ P1dB: +13dBm
- ✓ Psat: +15dBm
- ✓ NF: 6dB
- ✓ Connector: 1.85mm Female

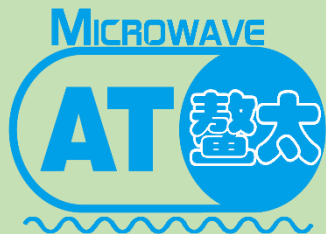
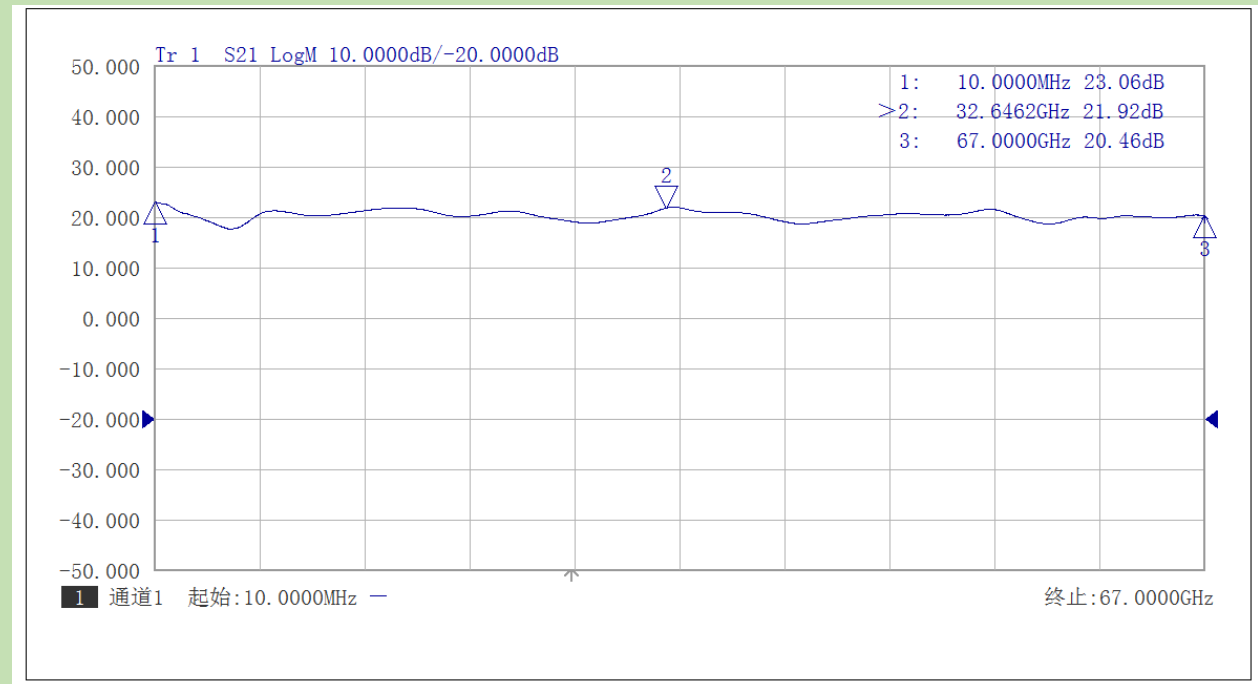


# 3.Ultra-Broadband Amplifier

AT-BB-0070-1815C

AT-BB-0070-2715C

- ✓ Frequency: 10MHz-70GHz
- ✓ Gain: 18/27dB
- ✓ P1dB: +13dBm
- ✓ Psat: +15dBm
- ✓ NF: 6dB
- ✓ Connector: 1.85mm Female

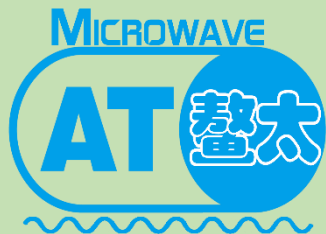
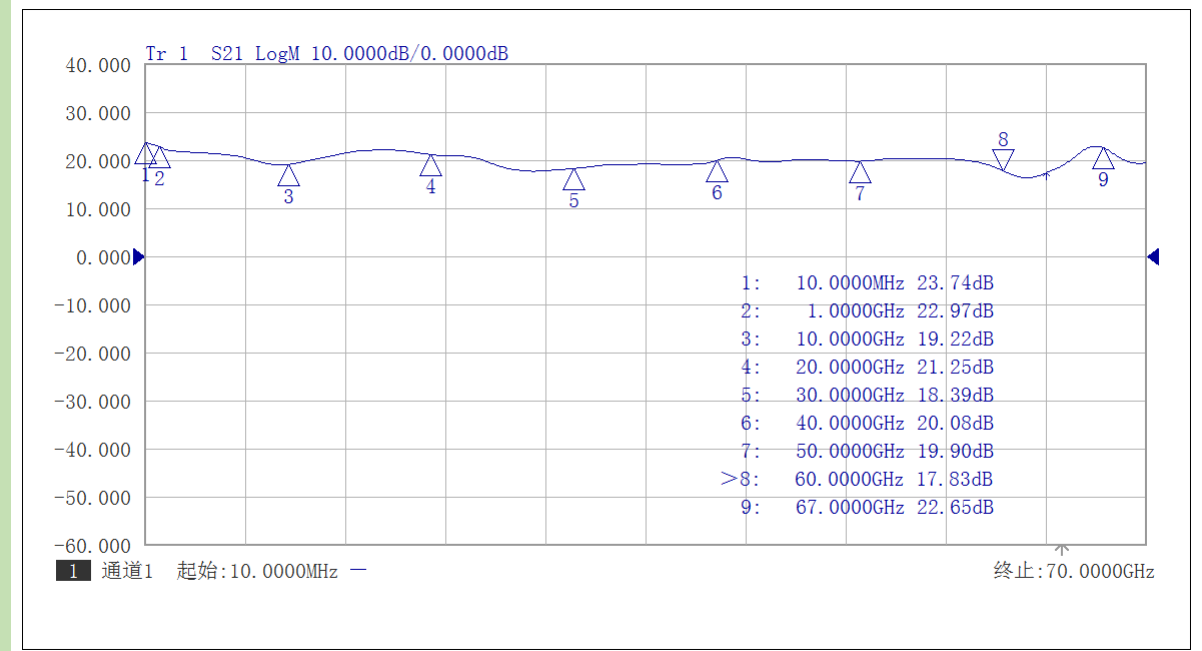


# 3.Ultra-Broadband Amplifier

AT-BBLF-0067-1815C

AT-BBLF-0067-2715C

- ✓ Frequency: 90kHz-67GHz
- ✓ Gain: 18/27dB
- ✓ P1dB: +13dBm
- ✓ Psat: +15dBm
- ✓ NF: 6dB
- ✓ Connector: 1.85mm Female

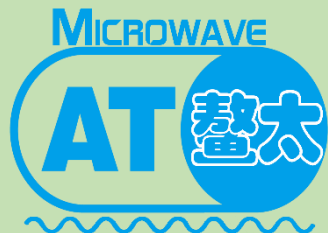
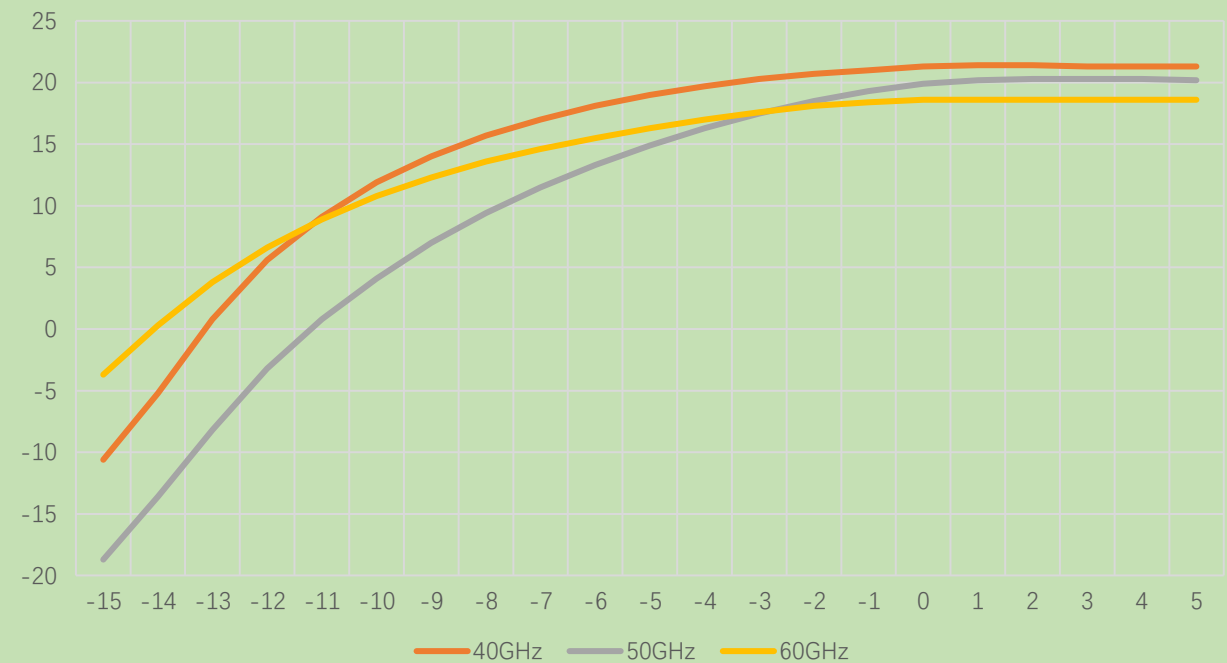
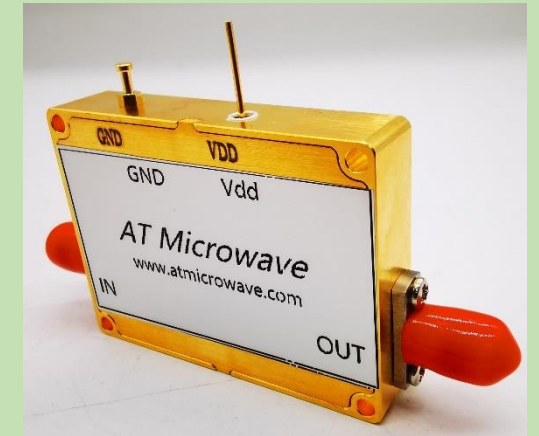


# 4. Frequency Multiplier

AT-AM4-4060-18XC

AT-AM4-3567-18XC

- ✓ Frequency: 40-60GHz
- ✓ Can be extended to 35-67GHz
- ✓ Multiplier Times: X4
- ✓ **Input: 10-15GHz, +3dBm**
- ✓ Pout: 40-60GHz, +18dBm
- ✓ Connector: 1.85mm Female

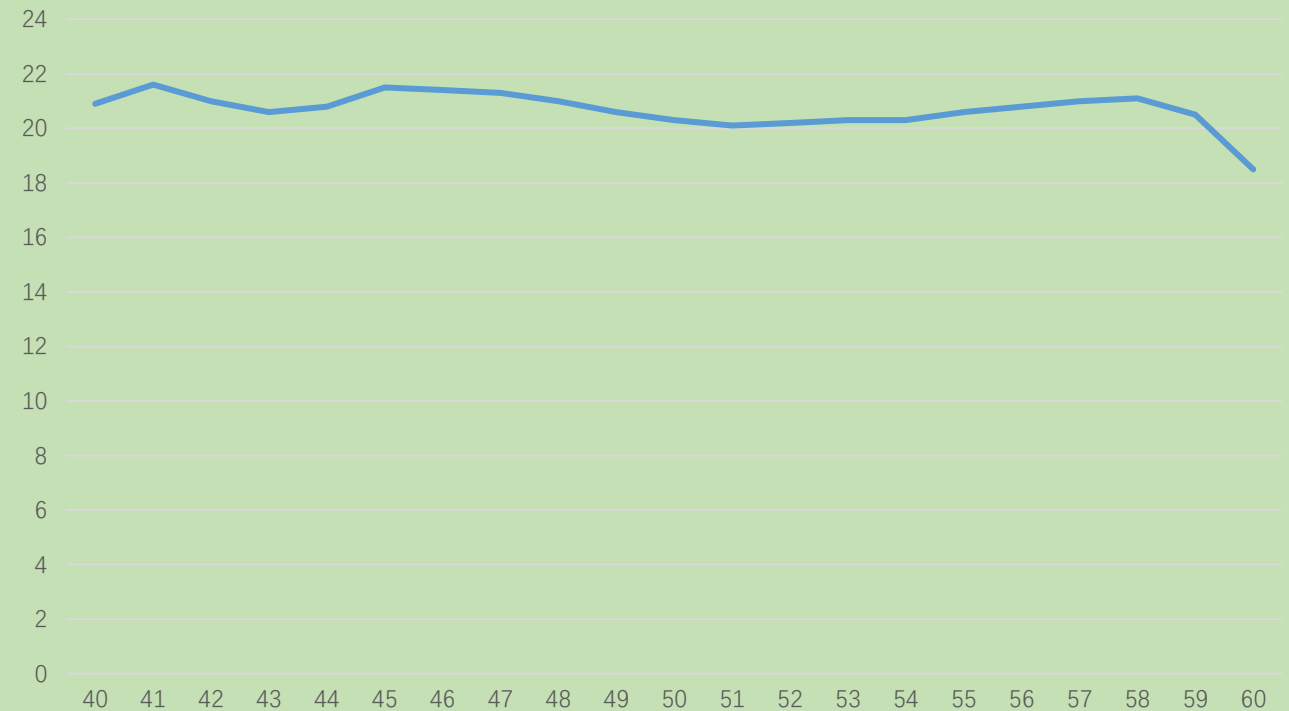
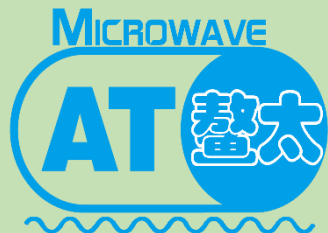


# 4. Frequency Multiplier

AT-AM4-4060-18XC2

AT-AM4-3567-18XC2

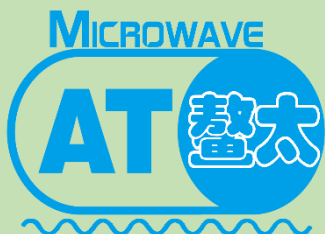
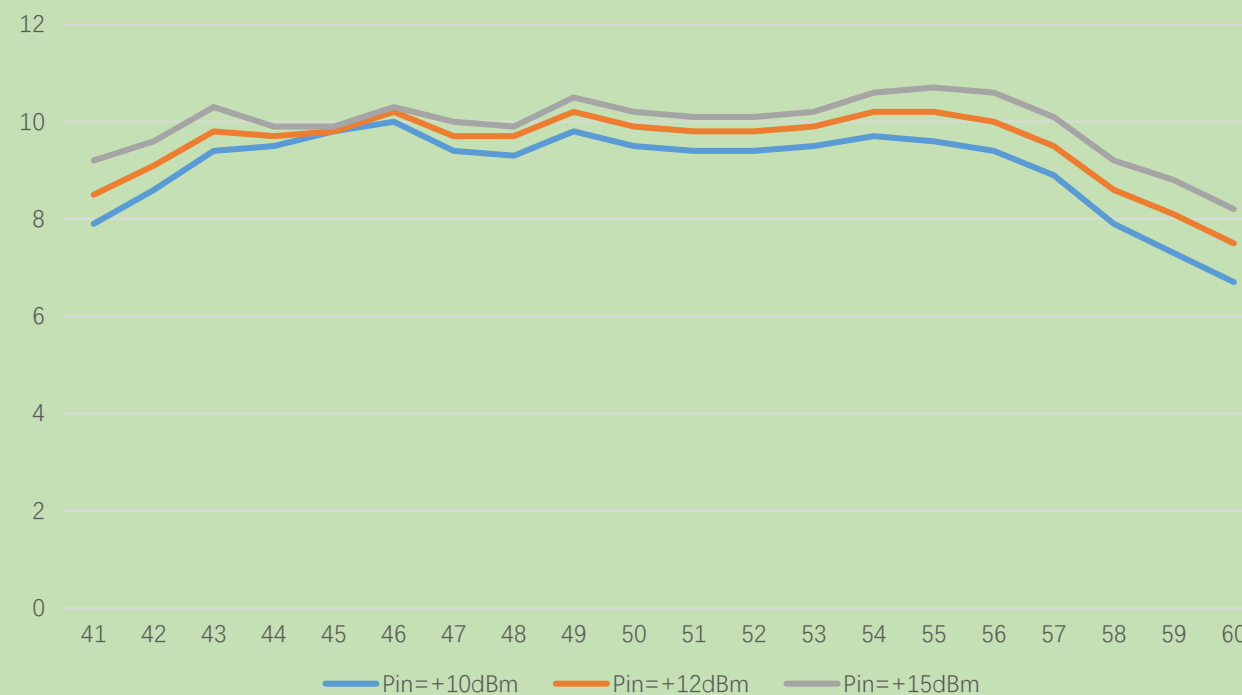
- ✓ Frequency: 40-60GHz
- ✓ Can be extended to 35-67GHz
- ✓ Multiplier Times: X4
- ✓ **Input: 10-15GHz, +13dBm**
- ✓ Pout: 40-60GHz, +18dBm
- ✓ Connector: 1.85mm Female



# 4. Frequency Multiplier

## AT-AM4-4060-10XC2

- ✓ Frequency: 40-60GHz
- ✓ Can be extended to 35-67GHz
- ✓ Multiplier Times: X4
- ✓ Input: 10-15GHz, +13dBm
- ✓ Pout: 40-60GHz, +10dBm
- ✓ Connector: 1.85mm Female



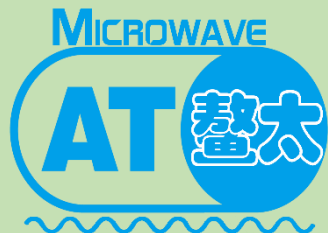
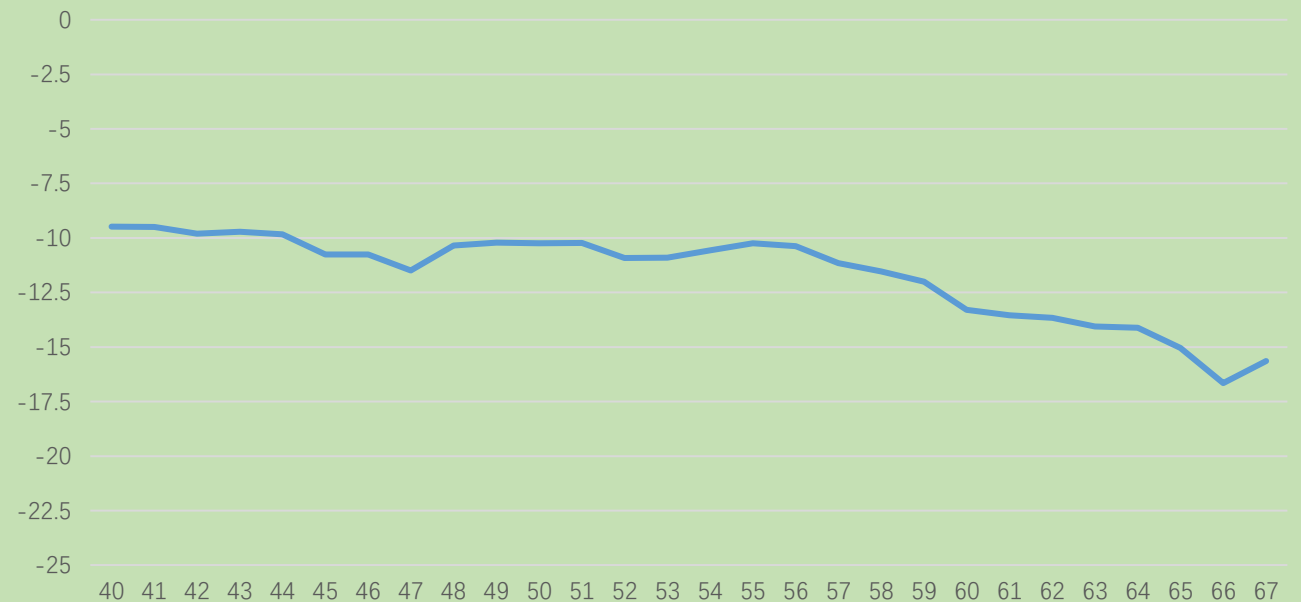


# 4. Frequency Multiplier



AT-PM2-4067A

- ✓ Frequency: 40-67GHz
- ✓ Passive Multiplier Times: X2
- ✓ Input: 20-33.5GHz, +13dBm
- ✓ Conversion Loss: -13dB
- ✓ Connector: 1.85mm Female

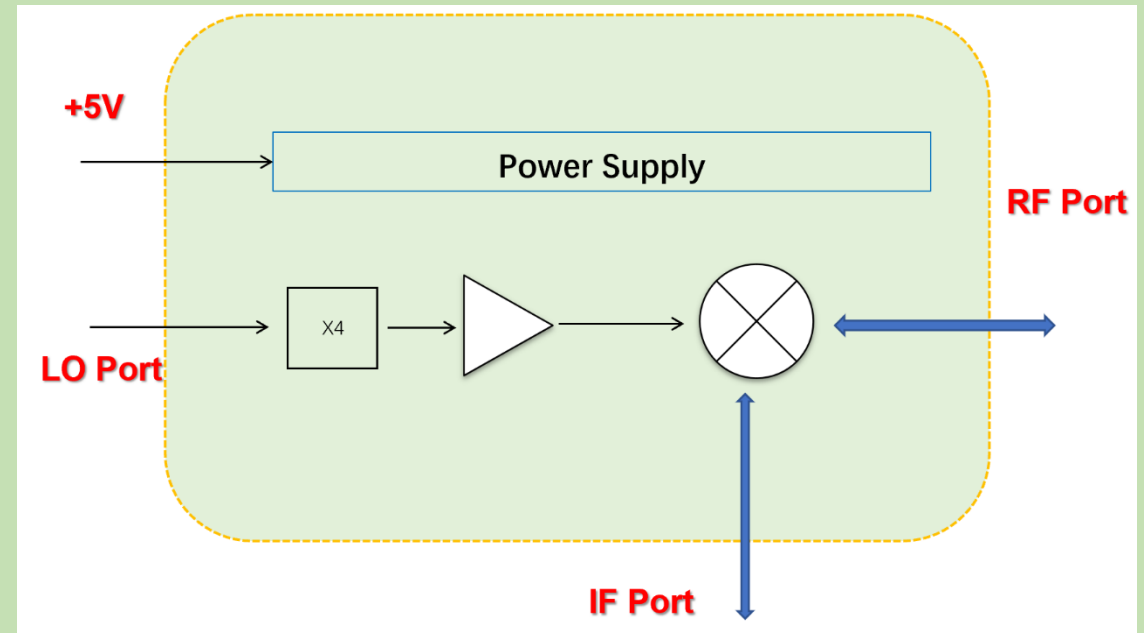
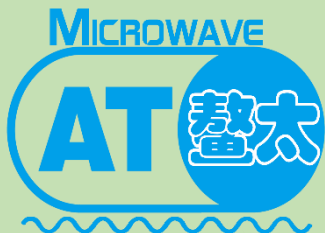


# 5.Up/Down Converter with LO Chain

AT-4MIX-4060HV

AT-4MIX-3567HV

- ✓ RF Frequency: 40-60GHz
- ✓ Can be extended to 35-67GHz
- ✓ LO Multiplier Times: X4
- ✓ Both Up/Down Converter
- ✓ Conversion Loss: -13dB
- ✓ Connector: 1.85mm Female

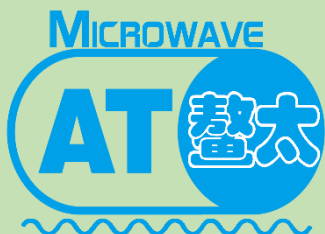
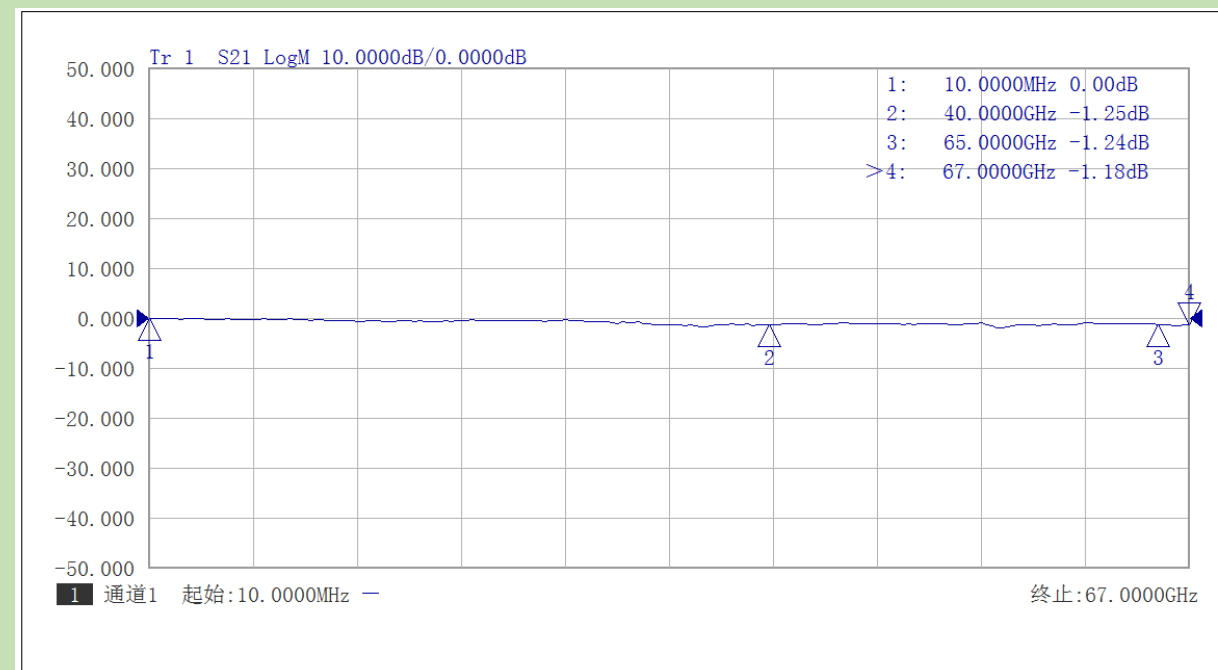


# 6. Passive Module-DC Block

AT-DC-18M18F

AT-DCLF-18M18F

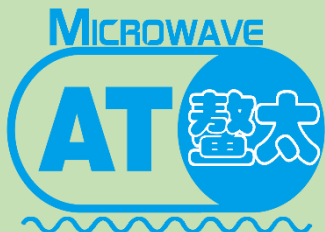
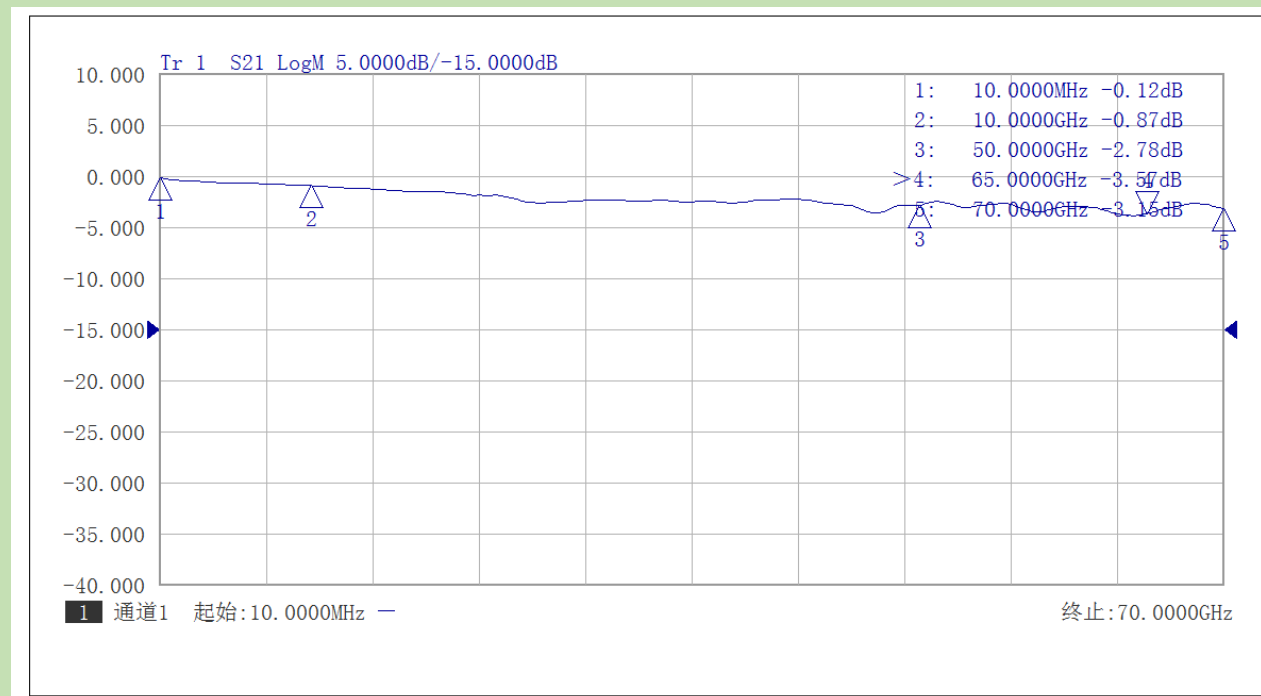
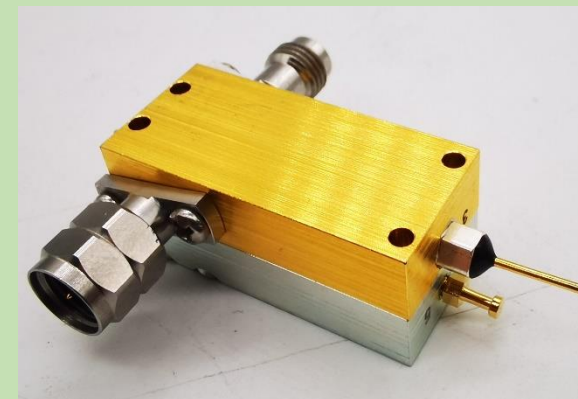
- ✓ Frequency: 30k-67GHz
- ✓ Insertion Loss: -2dB
- ✓ Return Loss: -10dB
- ✓ Connector: 1.85mm Female



# 6. Passive Module-Bias Tee

AT-BTL-0070LC

- ✓ Frequency: 30k-70GHz
- ✓ Insertion Loss: -2dB
- ✓ Return Loss: -10dB
- ✓ Power: 16V/0.23A
- ✓ Connector: 1.85mm Female

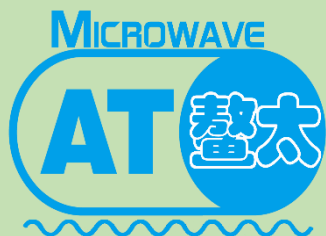
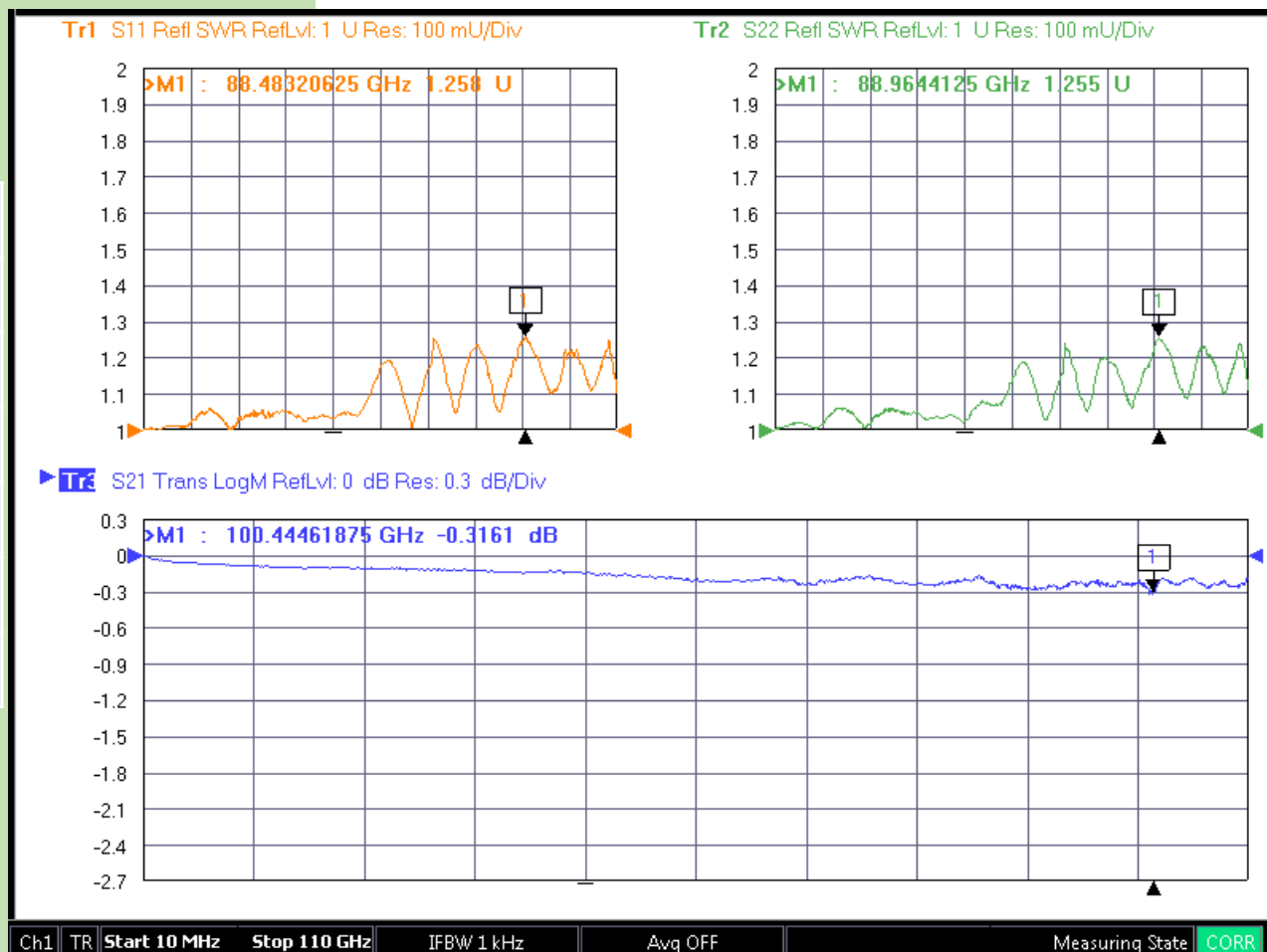


# 6. Adapter 1.0mm to 1.0mm



PN: AT-AP-10X10X

Parameter	Frequency Range(GHz)	Min	Typ	Max	Unit
Insertion Loss	DC-40GHz		0.3	0.5	dB
	40-67GHz		0.5	0.8	dB
	67-110GHz		0.7	1	dB
VSWR	DC-40GHz		1.2		
	40-67GHz		1.25		
	67-110GHz		1.35		

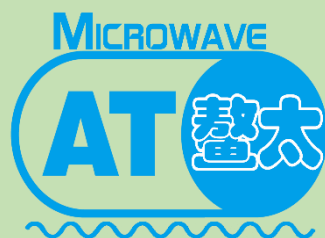
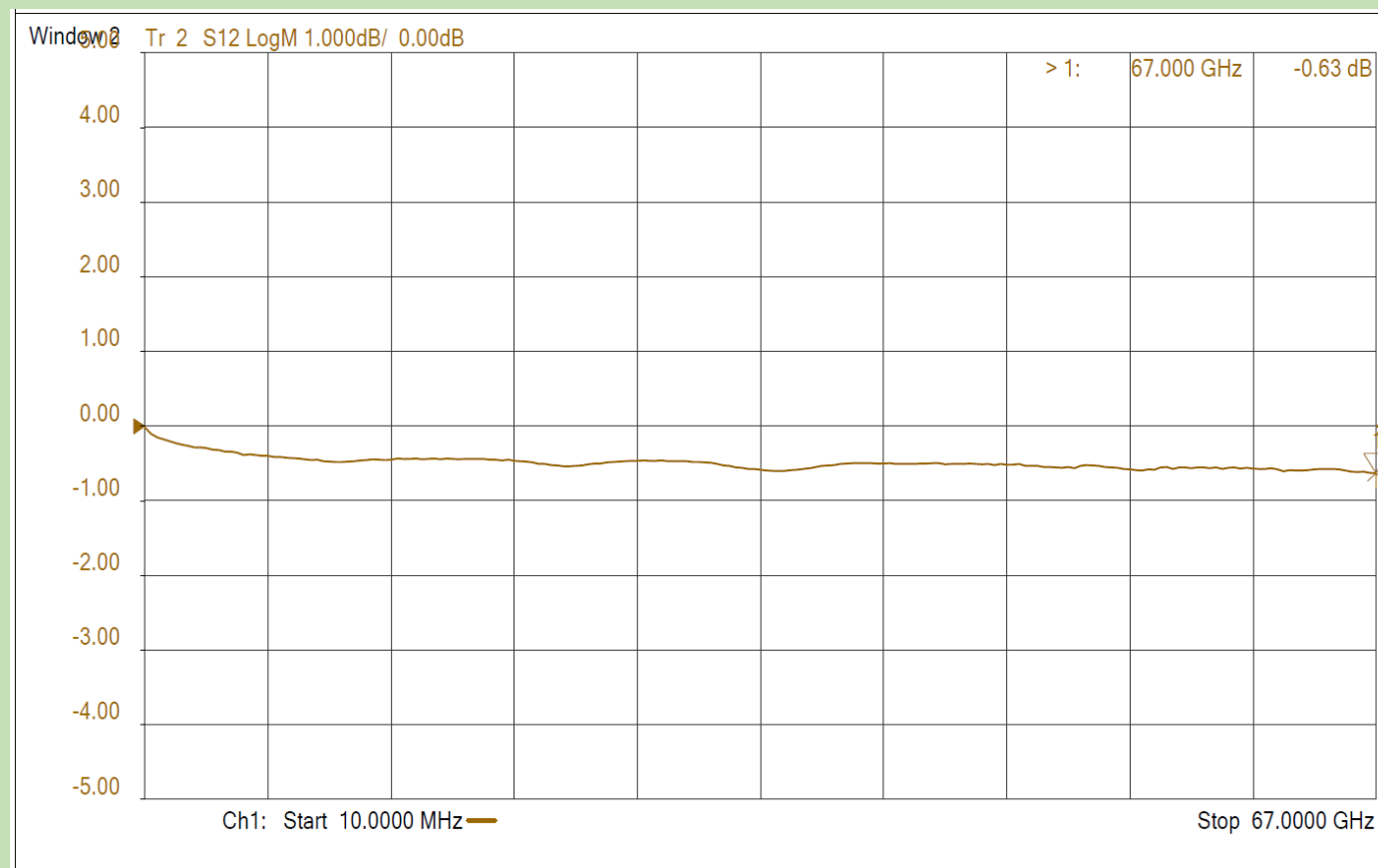


# 6. Adapter 1.0mm to 1.85mm



PN: AT-AP-10X18X

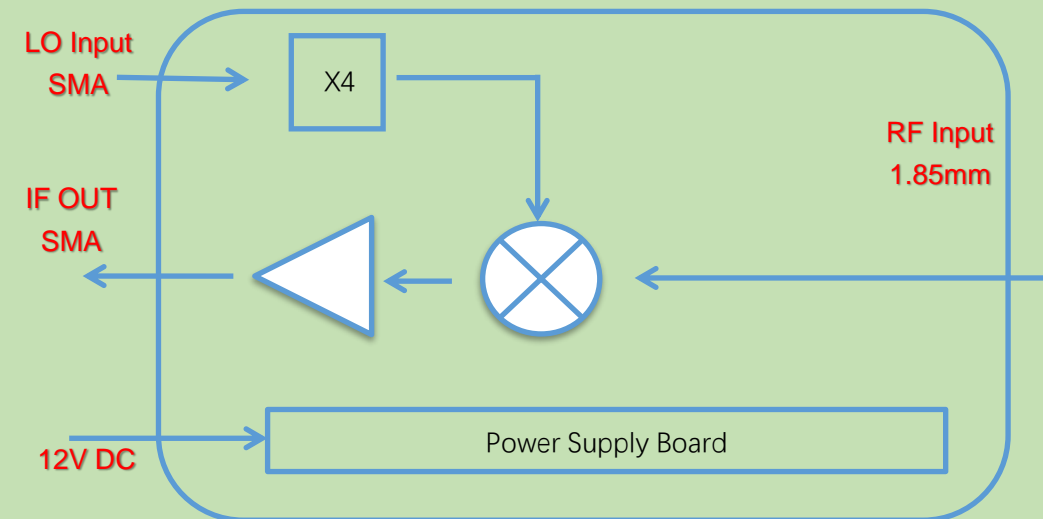
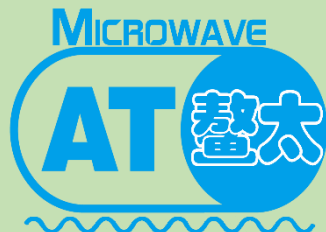
Parameter	Frequency Range(GHz)	Min	Typ	Max	Unit
Insertion Loss	DC-40GHz		0.3	0.5	dB
	40-50GHz		0.5	0.8	dB
	50-67GHz		0.8	1	dB
VSWR	DC-40GHz		1.2		
	40-50GHz		1.25		
	50-67GHz		1.3		



# 9. Test Equipment-Down-Converter

## AT-BTDC-4065V

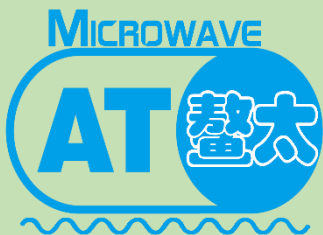
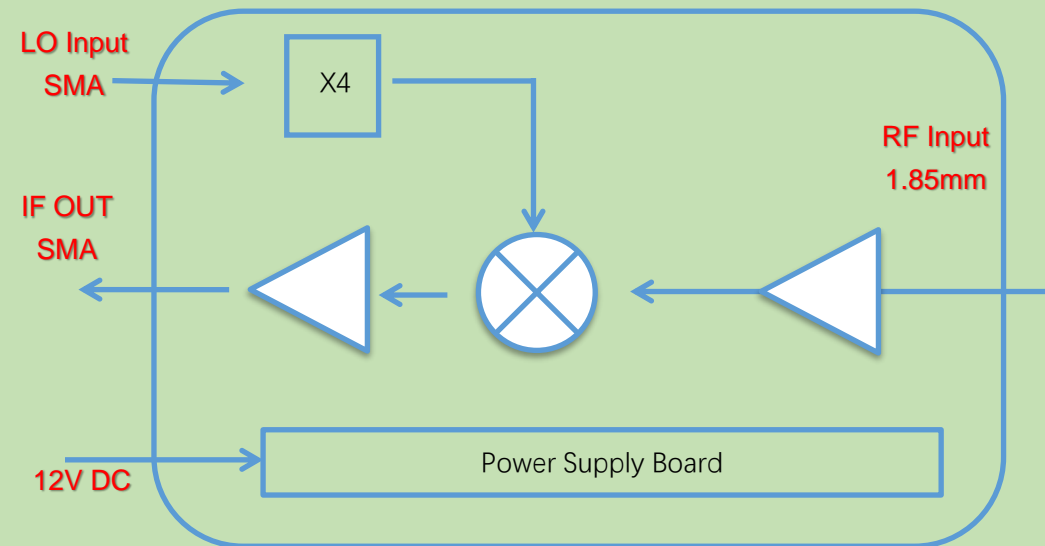
- ✓ RF Frequency: 40-65GHz
- ✓ LO Multiplier Times: X4
- ✓ Down Converter with IF Amplifier
- ✓ Conversion Gain: 8dB
- ✓ NF: 15dB
- ✓ Connector: 1.85mm Female



# 9. Test Equipment-Down-Converter

## AT-BTDC-4065VR

- ✓ RF Frequency: 40-65GHz
- ✓ LO Multiplier Times: X4
- ✓ LO Range: 10-16.5GHz
- ✓ IF: 50kHz-20GHz
- ✓ Conversion Gain: 35dB
- ✓ NF: 8dB
- ✓ Connector: 1.85mm Female





# 9. Test Equipment-Up-Converter

## AT-BTUC4-3567

- ✓ RF Frequency: 40-60GHz
- ✓ Can be extended to 35-67GHz
- ✓ LO Multiplier Times: X4
- ✓ Both Up/Down Converter
- ✓ Conversion Loss: -13dB
- ✓ Connector: 1.85mm Female

